

## Recombinant human SCF protein (Qk078)



**Type:** Stem cells

**Available for purchase:** Unit Size (µg): 25, 50, 100, 500, 1000

Buy online with secure credit card or purchase order.

[View this product and buy online](#)

### Product Information

---

Stem cell factor (SCF) is a critical factor in the maintenance and expansion of [hematopoietic stem cells](#) (HSCs) in the bone marrow microenvironment. Key myeloid progenitor differentiation factor for a variety of myeloid cells such as megakaryocytes, basophils, neutrophils, and monocytes, SCF is also a primary growth and activation factor for mast cells and eosinophils.

Recombinant SCF is a highly pure 18.5 kDa monomer, [animal origin-free](#) (AOF) and carrier-protein-free (CF). Qkine has optimized the SCF manufacture process to produce a highly bioactive protein with excellent lot-to-lot consistency for enhanced experimental reproducibility.

**Qkine SCF is also available as [cell therapy grade](#) with extended quality testing and documentation - [Qk078-CTG](#)**

#### Alternative protein names

Mast cell growth factor (MGF), Stem cell growth factor (SCF), C-kit ligand, Qk78

#### Molecular weight

18.5 kDa (monomer)

#### Protein Uniprot number

High purity human SCF protein (Uniprot number: P21583)

#### Species reactivity

- human
- species similarity:
- mouse - 79%
- rat -79%
- bovine - 82%
- porcine - 83%

### **Product Information**

- >98%, by SDS-PAGE quantitative densitometry
- Expressed in *E. coli*
- Animal origin-free (AOF) and carrier protein-free
- Manufactured in our Cambridge, UK laboratories
- Lyophilized from acetonitrile, TFA

### **Reconstitution instructions**

- Resuspend in sterile-filtered water at >50 µg/ml

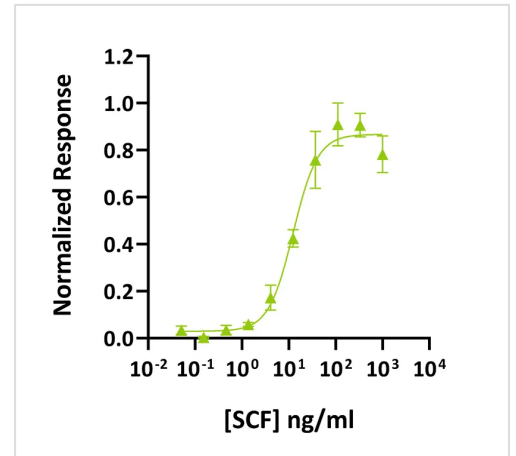
### **Further quality assays**

- Mass spectrometry: single species with expected mass
- Recovery from stock vial: >95%
- Endotoxin: <0.05 EU/µg protein

## Scientific Information

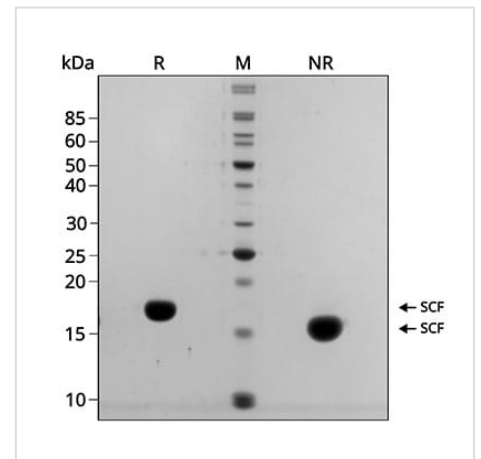
### Bioactivity

Recombinant SCF activity was determined using a Promega serum response element luciferase reporter assay in HEK293T cells co-transfected with c-Kit. Data from Qk078 lot #204804. EC50 = 12.4 ng/ml (0.67 nM).



### Purity

Recombinant SCF migrates at approximately 18 kDa (monomer) in reduced (R) and at approximately 15 kD in non-reduced (NR) conditions. No contaminating protein bands are present. The purified recombinant protein (3 µg) was resolved using 15% w/v SDS-PAGE in reduced (+β-mercaptoethanol, R) and non-reduced (NR) conditions and stained with Coomassie Brilliant Blue R250. Data from Qk078 lot #204621.



**Original product page:** <https://qkine.com/product/recombinant-human-scf-protein-qk078/>

**PDF generated:** 8 June 2026

Copyright © 2026 by Qkine Ltd. All rights reserved including graphics and images.