

Recombinant human EGF protein (Qk011)



Type: Stem cells

Available for purchase: Unit Size (µg): 25, 50, 100, 500, 1000

Buy online with secure credit card or purchase order.

[View this product and buy online](#)

Product Information

Human epidermal growth factor (EGF) protein is a potent [EGF-family](#) growth factor used in many human and mouse [organoid](#) and stem cell culture systems including intestinal and tumor organoid culture. EGF is also used in [epithelial](#) cell culture.

Qkine human EGF is a highly pure, [animal origin-free](#), bioactive 6.3 kDa recombinant protein, making it ideal for use in chemically defined [induced pluripotent stem cell \(iPSC\)](#), [embryonic stem cell \(ESC\)](#) and organoid culture media.

This protein is also available as GMP compliant [Cell Therapy Grade](#), to enquire email support@qkine.com.

Alternative protein names

Epidermal growth factor, Pro-epidermal growth factor, HOMG4, Beta-urogastrone, Urogastrone (URG), Qk11

Molecular weight

6.3 kDa

Protein Uniprot number

High purity human EGF protein (residues 971-1023, Uniprot: P01133)

Species reactivity

- human
- species similarity:

- mouse - 74%
- rat - 74%
- porcine - 85%

Product Information

- >98%, by SDS-PAGE quantitative densitometry
- Expressed in *E. coli*
- Animal origin-free (AOF) and carrier protein-free
- Manufactured in our Cambridge, UK laboratories
- Lyophilized from acetonitrile, TFA

Reconstitution instructions

- Resuspend in 10 mM HCl (Reconstitution solution A) at >50 µg/ml

Featured applications

- Tumor organoid culture
- Growth and proliferation of chondrocytes, fibroblasts and primary cells
- Epithelial organoid culture

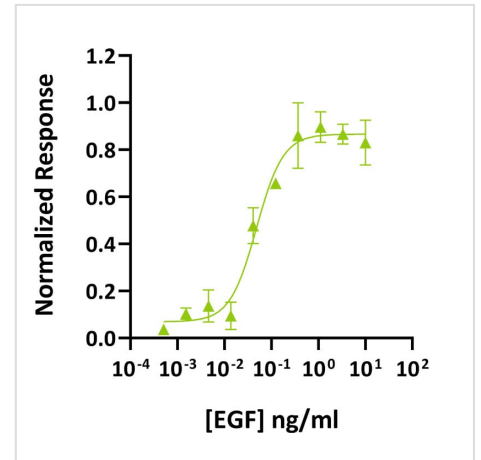
Further quality assays

- Mass spectrometry: single species with expected mass
- Recovery from stock vial: >95%
- Endotoxin: <0.05 EU/µg protein

Scientific Information

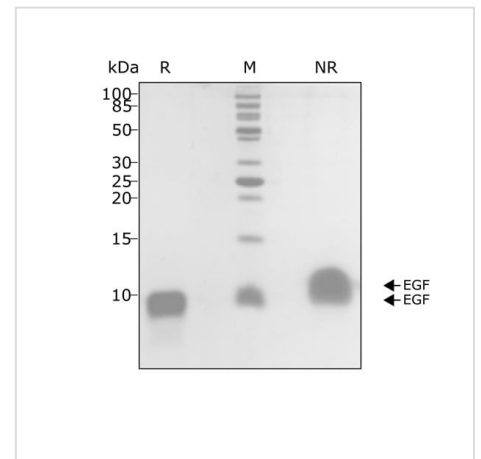
Bioactivity

EGF activity was determined using the Promega serum response element luciferase reporter assay in transfected HEK293T cells. Cells are treated in triplicate with a serial dilution of EGF for 3 hours. Firefly luciferase activity is measured and normalized to the control Renilla luciferase activity. EC50 = 72.8 pg/ml (11.6 pM). Data from Qk011 lot #10.



Purity

EGF protein migrates as a single band at ~12 kDa in non-reducing (NR) and 9 kDa in reducing (R) conditions. Purified recombinant protein (7 µg) was resolved using 15% w/v SDS-PAGE in reduced (+β-mercaptoethanol, R) and non-reduced conditions (NR) and stained with Coomassie Brilliant Blue R250. Data from Qk011 lot #011.



Original product page: <https://qkine.com/product/recombinant-human-egf-protein/>

PDF generated: 8 May 2026

Copyright © 2026 by Qkine Ltd. All rights reserved including graphics and images.